



## Kingswood Road, London, W4 5EU

FRESHLY PAINTED THROUGHOUT - A light & spacious two bedroomed maisonette presented over two floors and located in this very popular residential area, within walking distance to Chiswick High Road with its array of boutique shops and restaurants. Main retailers include M&S, Waitrose, Sainsbury Tesco & The Co-op.

Accommodation provides: 15'2 x 13'6 reception room with feature bay window to front and open fireplace, 15'4x 13'4 Kitchen/dining area with galley style kitchen to front with mainly integrated appliances, roof lights to front and full height windows to rear with central door to Juliet balcony overlooking gardens and beyond, two double bedrooms, family bathroom, Gas fired central heating. Local transport links include Chiswick Park & Turnham Green tube stations, numerous local bus routes with convenient vehicular access via A4/M4 to Central London, Heathrow and the West. Ealing Council Band D. EPC: D. The property is unfurnished and available now.

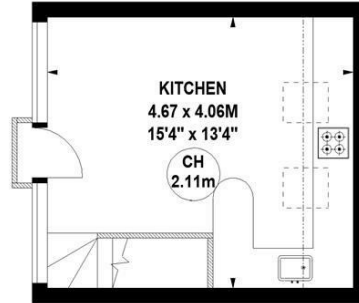
- Light and spacious split level apartment presented over two floors
- Very popular residential area
- Great for transport links
- Reception room with feature bay windows
- Open plan kitchen/dining area
- Full height windows to top floor with Juliet balcony
- Two double bedrooms
- Family bathroom
- Available now
- Offered unfurnished

**£2,250 Per Calendar Month**

# Kingswood Road, W4

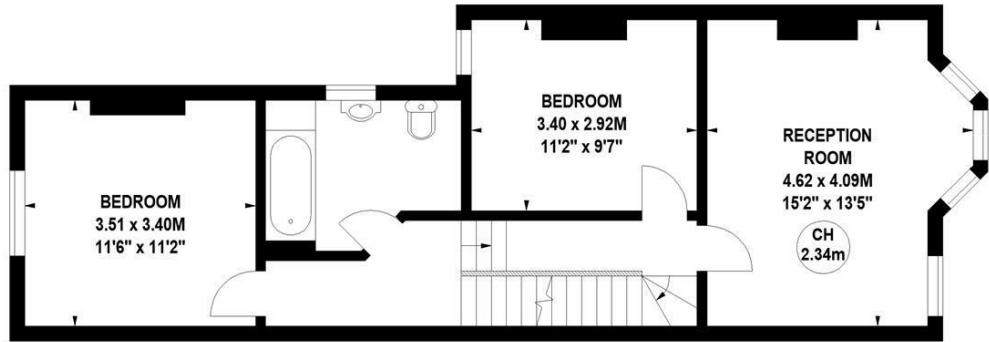
Approximate gross internal area

77.57 sq m / 835 sq ft

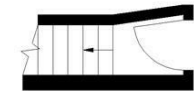


Second Floor

Key :  
CH - Ceiling Height

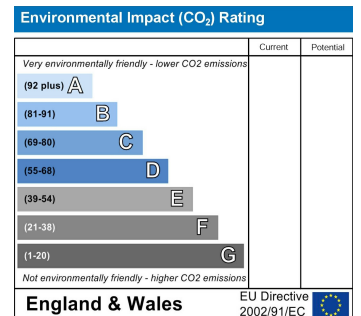
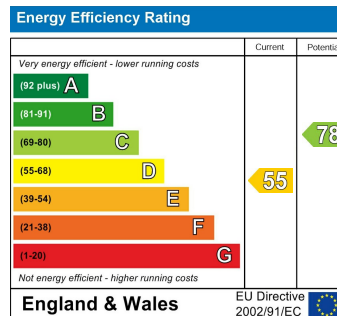


First Floor



Ground Floor Entrance

Not to scale, for guidance only and must not be relied upon as a statement of fact.  
All measurements and areas are approximate only



5-7 Turnham Green Terrace, Chiswick, London, W4 1RG

Tel 020 8747 8800

E-mail [lettings@whitmanandco.com](mailto:lettings@whitmanandco.com)

Website [www.whitmanandco.com](http://www.whitmanandco.com)